

Molle a onda Smalley

L'utilizzo della molla a onda esprime una forza perfettamente in asse.

L'ingombro ridotto della molla ad onda permette un design più compatto della valvola con conseguenti risparmi sui costi del materiale.



SMALLEY



Le altezze si riducono fino al 50% rispetto alle molle elicoidali
Stessi carichi e stesse frecce rispetto alle molle elicoidali
4000 misure in acciaio al carbonio e inox pronte a stock
Produzione in acciai speciali e superleghe come: Inconel, Elgiloy, Titanio, etc...

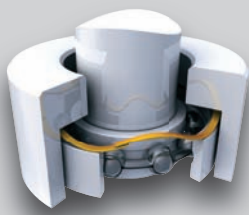
Nessun costo di attrezzatura sugli speciali

Carico perfettamente in asse

Elemento in un solo pezzo



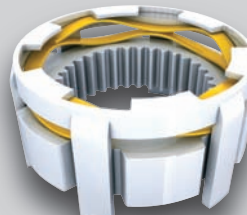
MOLLA A ONDA



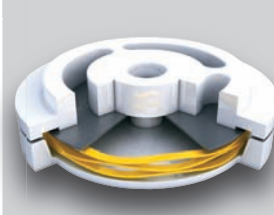
PRE-CARICO CUSCINETTI



CONNETTORE A BAIONETTA



INGRANAGGIO FLOTTANTE

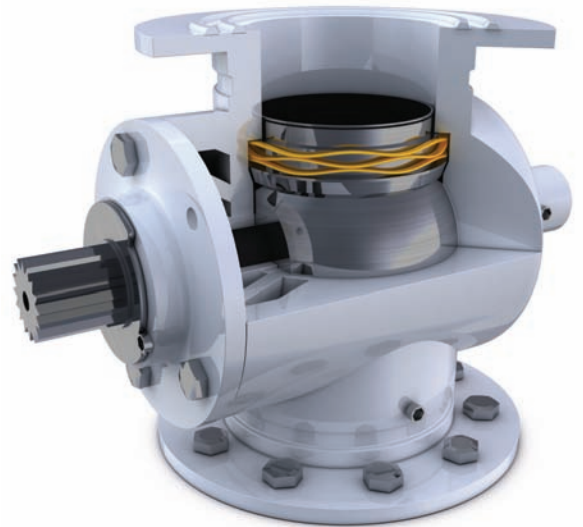
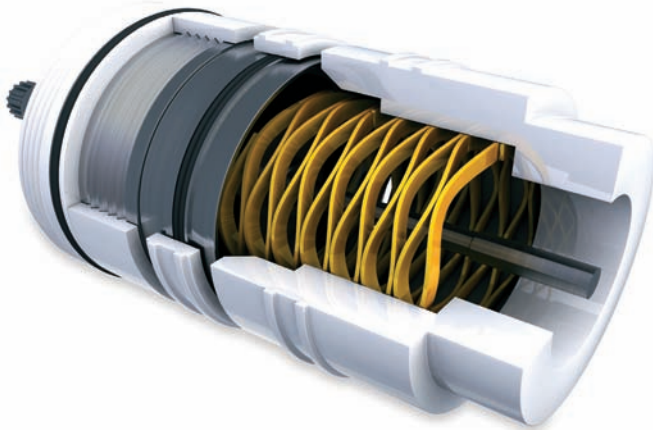


VALVOLA SFOGO PRESSIONE

GANDINI FASTENERS SRL

VIALE PIER PAOLO PASOLINI, 83 - 20099 SESTO SAN GIOVANNI (MI) ITALY

TEL. +39 02 241 047 250 - FAX +39 02 241 047 74 - ufficio commerciale: 250@gandini.it - info@gandini.it - www.gandini.it



Smalley wave spring

Fits tight axial spaces with reduced height and weight.

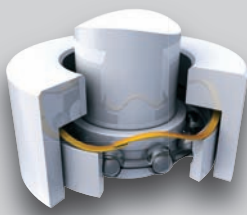
A more compactly designed valve with its consequent costs saving is possible thanks to the reduced overall dimensions of the wave spring.



Reduces spring heights by up to 50% compared to coil springs
Same force and deflection as coil springs
4000 stock sizes in carbon and stainless steel
Special alloys available for production including: Inconel, Elgiloy and more
No-Tooling-Costs™ on specials
Fits in tight radial and axial spaces
Composed by only one part



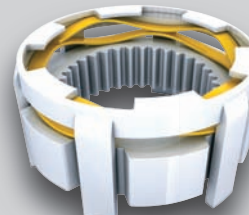
WAVE SPRING



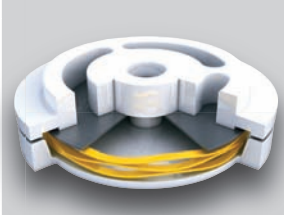
BEARING PRE-LOAD



BAJONET CONNECTOR



FLOATING GEAR



PRESSURE RELIEF VALVE